

TRM RulesManager™

FOR MAXIMO®

- ➔ Easy to program and update customized business rules
- ➔ Less painful upgrades; no loss of previous work
- ➔ System-enforced business process rules
- ➔ Interactive display engine
- ➔ Enhanced data security and integrity

TRM RulesManager is a robust configuration manager that allows an organization to customize MAXIMO system behavior and functionality without requiring Java programming.

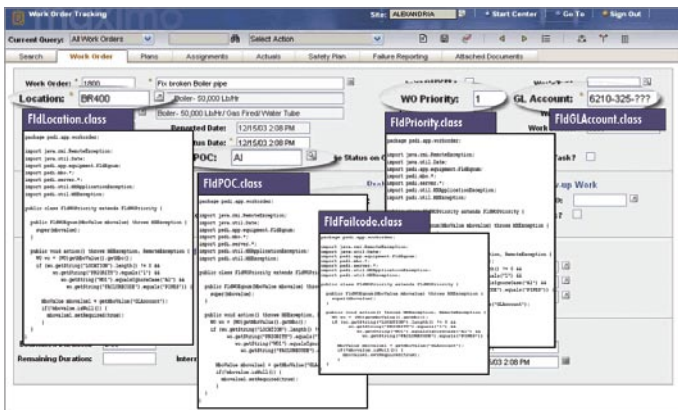
To maximize the value of your enterprise asset management (EAM) system, your system must be tailored to your organization's unique needs and business processes. TRM RulesManager extends the functionality of your EAM system and helps you get the most out of your investment.

It simplifies the set-up, configuration and operation – and provides a more user-friendly work environment.

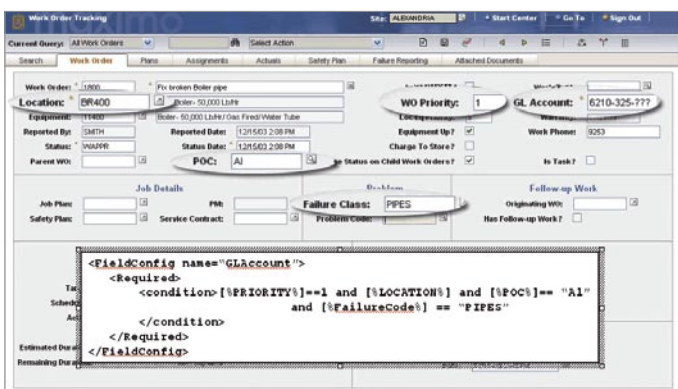
TRM RulesManager does not require complex Java programming, resulting in faster deployments and simpler configurations – saving both significant time and money during your EAM implementation.

Any organization that would benefit from business process rules that work directly with its enterprise asset management system will benefit from deploying TRM RulesManager. With it, you set the parameters. You determine how to provide or restrict access to information, change notifications, conditionally determine field values (both dynamic “required” and “read-only”) and more.

TRM RulesManager stores your configurable XML files in a single location that sits outside of your MAXIMO system, allowing you to customize your system as needed without changing the base code of your EAM system. This means that all your rules will be completely portable with upgrades, and you never have to fear that you've irretrievably altered your system.



BEFORE – creating required fields for users meant endless hours of programming hundreds of lines of Java code.



NOW – TRM RulesManager simplifies the process so you can create required fields with only a few lines of English-like code.

TRM RulesManager's Features Include:

- English-like syntax for rules writing
- No Java programming required
- Flexibility for phased implementation and user training
- Fine-tuning of business requirements
- Flexible value lists
- Rich set of condition-driven actions
- Interactive display feedback
- Display engine with dynamic tab conditions to turbo-charge your EAM system and end-user's experience

TRM RulesManager is easy to use and helps organizations overcome the obstacles and inefficiencies in the configuration, testing and deployment of their EAM system.

English-like Syntax Reduces Complexity

TRM RulesManager uses English-like syntax to configure event-driven business rules. These rules are stored in files that are easy to configure within a single location, regardless of the number of databases or servers in the environment. This reduces the support resources required for large scale enterprise configurations and eliminates the need for cloned applications and database triggers – saving you both programming time and server space.

Ideal for Programmers and Non-Programmers Alike

TRM RulesManager functions include field lookup, field and form validation, auto-form population, dynamic value lists, security model extensions and event services. All functions are presented as both parameter-driven rules for non-programmers and as an application programmer interface (API) for developers. Most lookup and callback functions support the use of embedded SQL statements.

Implementation Flexibility

Specific functionality can be applied to select application servers, groups and users. (You also have the option of turning them on or off at run-time.) These functions provide more flexibility when setting up phased implementations, user training schedules, fine-tuning group and user requirements, or just about any ad-hoc business rule, no matter how complex.

Ironclad Data Integrity

Defined business rules assure that correct information is entered into the EAM database. Business rules are set up to ensure users input data in the required format. By blocking bad data before it is entered into the database, your organization will avoid potentially serious data-related issues in the future.

Flexible Value Lists

TRM RulesManager enables the configuration and building of value lists based on any criteria. These include any combination of user name, group name, site, organization or field values from the current screen. These value lists can be used like any traditional value list in your EAM system, but with TRM RulesManager, they are built without technical Java and JSP programming.

Interactive Display Feedback

Obtaining the correct data input from your EAM system users has never been easier. Required data input fields now can be highlighted visually with “hot” colors that revert to normal color after entry. This greatly simplifies your system’s data input screens and provides a more rewarding and user-friendly experience.

Workflow-Driven, Auto-Sequencing of Required Fields

Status changes or fields that require additional data input automatically navigate in your desired sequence. Fields currently being edited are highlighted – showing in real-time the affect of your changes.

No More Cloning

Presenting different sets of options to different users or groups used to require copies or “cloned” applications. It was necessary to tailor each clone to the specific user needs. As your user base grew, and as individual or global modifications were needed, this effort became more and more cumbersome. TRM RulesManager eliminates the need for cloning. Your single EAM application instance now can be configured to present multiple faces based on any criteria you specify. Tabs or groups of tabs can be replaced, hidden or shown dynamically based on user-specific data field requirements.

Dynamic Content and Data Security

Entire sections of the form screens can be changed dynamically based on specific field entry values. Hidden content and fields are never rendered to the browser, and users can never access secure data through the browser’s “view source” button.

Enhanced Messaging and Dialogs

TRM RulesManager has the ability to send a popup message or a dialog box to the end user. Simple alerts can convey more useful information than using the standard rich text format. These alerts allow for enhanced interactivity between the user and the system. This increases the integrity of your data inputs and enriches the user experience. Informational alerts and dialogs are transmitted without interrupting a record save.

Find Out More

To find out more about TRM RulesManager for MAXIMO or any other TRM product or service, call 877-548-5100 or visit our website at www.trmnet.com.