

## KPI MANAGER AT A GLANCE

TRM KPI MANAGER™ IS A LEADING BROWSER-BASED PERFORMANCE MEASUREMENT AND REPORTING SYSTEM FOR MONITORING, COMMUNICATING AND MANAGING KEY PERFORMANCE INDICATORS (KPI'S).

### BENEFITS:

- CLARIFIES AND BUILDS CONSENSUS ON STRATEGY
- COMMUNICATES STRATEGY AND MEASURES OF SUCCESS
- SHARPENS FOCUS ON PRIORITIES
- MOTIVATES AND ALIGNS BEHAVIOR
- SUPPORTS ACCOUNTABILITY AND REWARDS
- SUPPORTS DATA ANALYSIS AND EVALUATION
- IMPROVES COST CONTROL
- IMPROVES OPERATIONAL CONTROL
- PROMOTES STANDARDIZATION ACROSS OPERATIONAL UNITS
- SUPPORTS RESOURCE PLANNING AND ALLOCATION

## MEASURE AND VIEW OPERATIONAL PERFORMANCE ACROSS YOUR ENTERPRISE

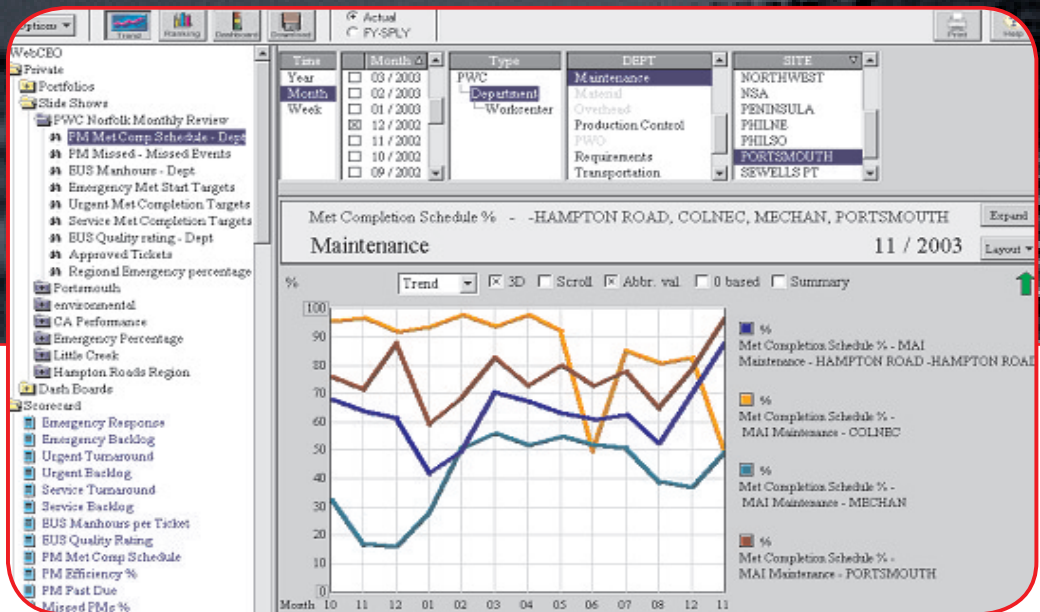
Business performance measurement is essential to mission success. You need to effectively communicate reliable and up-to-date information to all your organization's stakeholders – from executive management to line personnel. TRM KPI Manager™ is a powerful performance measurement and reporting tool that will help your organization make fact-based strategic and tactical decisions and execute business strategies.

KPI Manager combines J2EE Internet architecture, robust functionality, flexible configuration tools, high performance, and a powerful graphical user interface (GUI) to help you capture, organize, and communicate your organization's KPI's. KPI Manager also provides a mechanism for communicating information in near real time via a graphics-rich presentation interface. This lets organizations effectively track and communicate KPI's based on proven methods of business performance analysis like the Balanced Scorecard and the Measure Network™.

# MAXIMIZE

# COMPREHENSIVE PERFORMANCE MANAGEMENT TOOL

KPI MANAGER WITH ITS GRAPHIC RICH REPORTING TURNS KPI DATA INTO ACTIONABLE INFORMATION.



## Increases Efficiency and Facilitates Informed Decisions

KPI Manager offers the best of all worlds: ease of use, robust functionality, and a true Internet architecture. When implemented by Total Resource Management (TRM) for enterprise asset management (EAM), it can help increase the efficiency of business processes and improve the utilization of assets. With KPI Manager on your team, everyone in your organization can make decisions based on the latest quantitative information.

## Powerful Features

KPI Manager makes it easy to monitor any organization's overall performance, as well as to identify problem areas. Its powerful features include:

- Data visualization, including trends, ranking, maps, and dashboards
- Real-time alerts
- Data discovery and analysis, including same-period-last-year data comparisons
- Enterprise reporting and data mining
- New data measures created from KPI's through calculated fields
- Dynamic data grouping by KPI's and data dimensions, such as time, organizational unit, and location
- Smart cache for speed and performance
- Data export to common formats such as Excel

## Easy to Use and Available Virtually Anywhere

KPI Manager is easy to implement and can be deployed in weeks, not months. Training is minimal and employees can be productive in an hour or less. In addition, you can access the system from just about anywhere using an Internet browser or PDA. This accessibility means that people responsible for specific KPI's can view key information from virtually any location in real time.

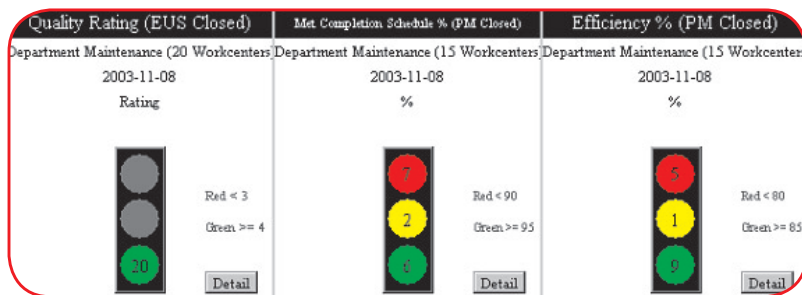
## Interfaces with MAXIMO®

TRM interfaces KPI Manager to MAXIMO to deliver KPI's related to asset management and maintenance. This is another way that TRM helps our clients improve the operational performance of their EAM system. By continuously measuring the outcomes, impact, and value of investments – and making that information available to people throughout the organization – our clients are able to pursue continuous improvement and get the most out of their vital assets.

# TURN DATA INTO HIGHLY VISUAL INFORMATION

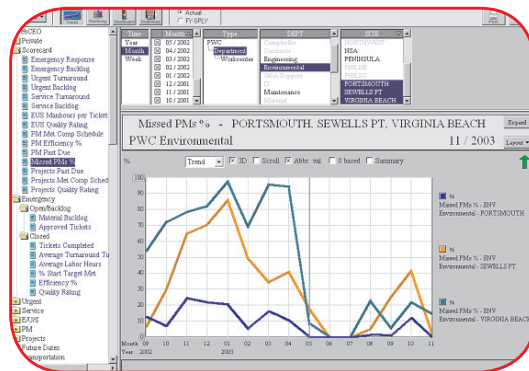
KPI Manager gives you one-click access to multiple display options for highly visual, actionable information. Formats and capabilities include:

## Dashboard



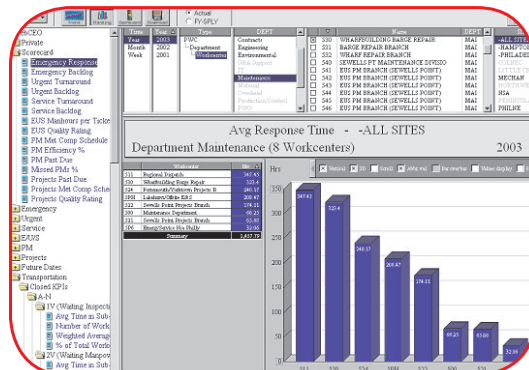
KPI MANAGER CREATES ORGANIZATIONAL DASHBOARDS FOR A QUICK VIEW TO MONITOR THE PERFORMANCE ACROSS YOUR BUSINESS ENTERPRISE AND TO COMPARE ACTIVITIES AND PERFORMANCE.

## Trends



TRENDS REPORT MEASURES ACTIVITY PERFORMANCE ACROSS YOUR BUSINESS OVER TIME TO DETERMINE WHICH LOCATIONS NEED ATTENTION AND DETERMINE CORRECTIVE ACTION.

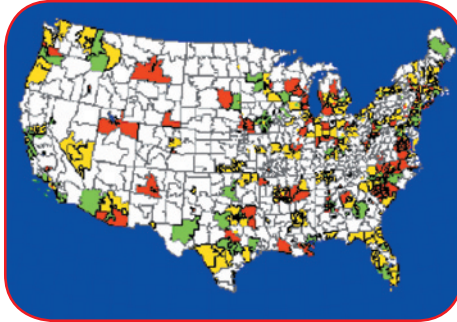
## Rankings



THE BAR CHART DISPLAY MONITORS YOUR ACTIVITIES AND STRUCTURES THE DISPLAY IN RANKING ORDER. THIS CHART ILLUSTRATES AVERAGE ANNUAL MAINTENANCE RESPONSE TIME AT EIGHT WORK CENTERS.

# TURN DATA INTO HIGHLY VISUAL INFORMATION (CONTINUED)

## Maps



KPI MANAGER HAS THE  
MOST ROBUST MAPPING  
FACILITY OF ANY PRODUCT  
OF ITS KIND.

With KPI Manager, you can even save sets of query results – both data and charts – to produce “live” slideshow presentations. KPI Manager slideshows save your preferred views for recall at any time, always presenting the most recent KPI values. With dynamic comparison of any number of KPI’s up and down the organization, KPI Manager is the most powerful enterprise performance measurement system available.

### Find Out More

To find out more about TRM, KPI Manager or any other TRM product or service, call **877-548-5100** or visit our website at **[www.trmnet.com](http://www.trmnet.com)**

### TRM Headquarters

510 King Street  
Suite 300  
Alexandria, VA 22314  
Telephone: 877-548-5100  
Fax: 703-548-3641

MAXIMO is a trademark of MRO Software, Inc.  
Measure Network is a trademark of MeasureNet.

TRM KPI Manager is a trademark of Total Resource Management, Inc